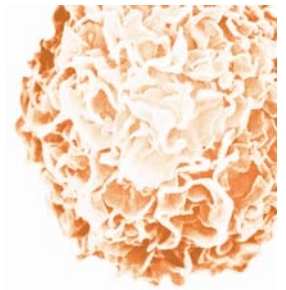


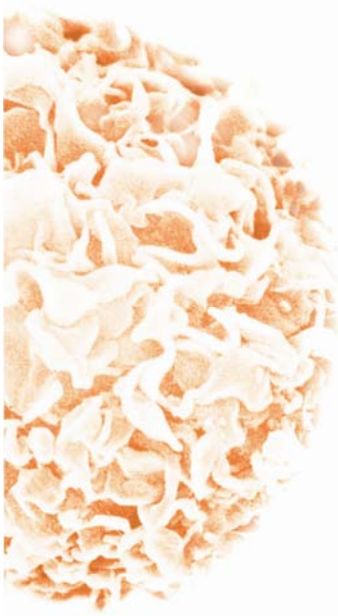
11<sup>th</sup> International Symposium



GRAFT VERSUS HOST

**GvH**  
**GvL**

GRAFT VERSUS LEUKEMIA



**GvH/GvL 2012**

**Thon Dittmer Palais, Regensburg, Germany**  
**March 28 to 30, 2012**



**GvH**  
GRAFT VERSUS HOST

Competence Center  
Department of Hematology & Oncology  
University Hospital Regensburg



Dear colleagues,

The biggest challenge in transplantation medicine is to understand and manage the immunology of graft-versus-host and graft-versus-leukemia reactions.

The GvH/GvL meeting was first organized by Hans-Jochem Kolb in 1995 and it has since been a tradition of this meeting held every two years that the latest achievements are monitored, discussed and put yet another step forward. It is a great pleasure and honour for us to continue a meeting series so well renowned and rich in tradition and host it in the historical walls of Regensburg.

Enormous progress was made in elucidating the mechanisms of GvH and GvL and improving the management of our patients. Today we seem to be closer to having the tools to specifically shape the immune repertoire in the context of GvL and DLI. Restoring immune regulation in gastrointestinal GvHD, the central role of the inflammasome and APCs, targets like the haematopoietic niche or B cell reconstitution and an update on the use of donor lymphocytes and the clinical relevance of SNPs to predict GvHD and outcome are the major topics of this year's meeting. For the first time, the Hans Jochem Kolb research award will be granted to young and enthusiastic scientists.

As in the previous meetings we aim to have two days of intensive interaction to discuss and develop up-to-date concepts within a small group of invited speakers, chairs and discussants.

The Thon Dittmer Palais is situated in the historical centre of the city and allows us to come together not only for presentations, but also for interactive evening discussions.

We are looking forward to welcoming you in Regensburg in March 2012!

Yours sincerely

Prof. Dr. Ernst Holler

Prof. Dr. Reinhard Andreesen

# Program

Wednesday, March 28

12.30 - 13.00      **Welcome Lunch**

13.00 - 13.15      **Welcome**

13.15 – 16.30      **Targets of GvH and GvL: The hematopoietic niche**

Charis: Daniel Wolff, Nikolaus Kröger

**3D model systems of the hematopoietic stem cell niche**

Peter Wuchter, Heidelberg

**The hematopoietic niche – possible target in GvH and GvL**

Jochen Grassinger, Regensburg

**GvH and GvL in myelofibrosis – graft-versus-haematopoietic niche?**

Nikolaus Kröger, Hamburg

**Targets of GvH: B cells**

**B cell deficiencies in autoimmune diseases and splenic disorders**

Rita Carsetti, Rome

**B cells in cGvHD**

Hildegard Greinix, Vienna

**B cell deficiency and GvHD – role of the bone marrow B cell niche**

Matthias Edinger, Regensburg

16.30 – 17.00      **Coffee Break**

**17.00 – 18.30**

**The Inflammasome**

Chairs: Marina Kreutz, Andreas Mackensen

**The inflammasome – from sensing danger to inflammatory disease**

Lars French, Zürich

**Mechanisms of RIG-I induced inflammasome activation and antitumor immunity**

Hendrik Poeck, München

**NALP3 inflammasome and GvHD**

Robert Zeiser, Freiburg

**19.00 – 21.00**

**Open Plenary Discussion (with beer and bretzels)  
Steroid resistant GvH: Mechanisms and trends**

**Thursday, March 29**

**8.30 – 10.30**

**Intestinal Inflammation**

Chairs: Matthias Stelljes, Lutz Uharek

**Lessons from IBD**

Gerhard Rogler, Zürich

**Vit D in intestinal inflammation**

Margerita Contorna, Pennsylvania

**Intestinal flora and induction of regulatory T Cells**

Markus Geuking, Bern

**The microbiome in mice and men**

Marcel van den Brink, New York

**IL32 and epithelial protection**

Joachim Deeg, Seattle

**TLRs and intestinal GvHD**

Axel Nogai, Berlin

**10.30 – 11.00**

**Coffee Break**

**11.00 – 13.30**

**Predictors of Outcome in 2012: SNPs and Proteomics**

Chairs: James LM Ferrara, Selim Corbacioglu

**The Seattle view**

John Hansen, Seattle

**NOD2 in 2012**

Walter van der Velden, Njimwegen

**The European scores**

Anne M. Dickinson, Newcastle

**Reg3 a as a biomarker of intestinal GvHD**

James LM Ferrara

**Proteomics to predict steroid resistant GvHD**

Eva Maria Weissinger, Hannover

**13.30 – 14.30**

**Lunch**

**14.30 – 17.00**

**GvL in 2012**

Chairs: Dietger Niederwieser, Wolfgang Herr

**GvL and Cord Blood**

Hans-Jochem Kolb, München

**Minor antigen specific strategies**

Fred Falkenburg, Leyden

**Leukemia antigen specific strategies**

Martin Bornhäuser, Dresden

**$\alpha/\beta$  T cell depletion and GvL bei gamma/delta T cells**

Ruppert Handgretinger, Tübingen

**GvL in daily clinical practice**

Jürgen Finke, Freiburg

**17.00 – 18.00**

**Interactive Poster Discussion**

**19.00**

**Hans Jochem Kolb Award**

## Friday, March 30

08.30 – 11.00

### Activation of APCs

Chairs: Hermann Einsele, Petra Hoffmann

#### Inflammatory checkpoints

Ron Chakraverty, London

#### Priming of T cells

Andreas Beilhack, Würzburg

#### Role of LCs in GvHD

Ralf Meyer, Mainz

#### Cross presentation in GvHD

Matthew Collin, Newcastle

#### CMV and GvL

Ahmed Elmaagacli, Duisburg

#### Vit D and GvHD

Marina Kreutz, Regensburg

11.00 – 11.30

### Coffee Break

11.30 -13.00

### IDO and Peripheral Tolerance

Chairs: Edward Geissler, Anne Janin

#### IDO and IFN $\gamma$ in solid organ and stem cell transplantation

Andreas Heitger, Vienna

#### IDO producing cells in the gut

Anne Janin, Paris

#### Tryptophan metabolites in GvH and GvL

Ernst Holler, Regensburg

13.00 – 13.15

### Summing up

This symposium would not have been possible without the generous support with unrestricted educational grants from:



Amgen GmbH

Alexion Pharma Germany GmbH

Bristol-Myers Squibb GmbH & Co. KGaA

Celgene GmbH

Essex Pharma GmbH

Fresenius Biotech GmbH

Gilead Sciences GmbH

Johnson & Johnson Medical GmbH, Geschäftsbereich Therakos

Novartis Pharma GmbH

Roche Pharma GmbH

## **Conference Venue**

Thon Dittmer Palais  
Haidplatz 8  
93047 Regensburg  
Germany

## **General tourist and hotel information**

Tourist-Information Altes Rathaus  
Rathausplatz 4  
93047 Regensburg  
Germany  
Tel.: +49-(0)941/507-4410  
Tel.: +49-(0)941/507-4411  
<http://www.tourismus.regensburg.de/tourismus/de/medienportal/1160>

## **Local Contact**

Susanna Blüml  
Dept. of Hematology and Oncology  
University of Regensburg  
F.J. Strauss Allee 11, 93053 Regensburg, Germany  
Tel.: +49-941-944-5542  
Fax: +49-941-944-5543  
[susanna.Blueml@klinik.uni-regensburg.de](mailto:susanna.Blueml@klinik.uni-regensburg.de)